

# KAYE

NEW

## Kaye LTR-150

Dry Block and Liquid Bath  
All-in-One Temperature Calibrator  
flexible - easy to use (-30 to 150°C)



The Kaye LTR-150 is the most advanced Multi-purpose calibrator specifically designed to address the capacity and flexibility needs for thermal validation.

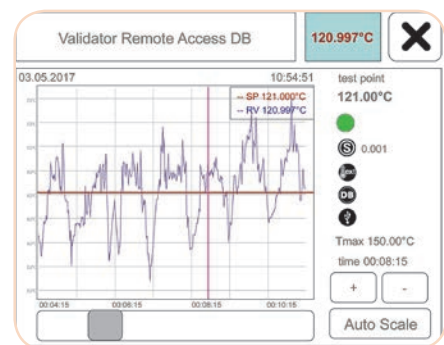
From its ability to calibrate 48 thermocouples at one time to its versatility to function as a Dry Block, Liquid Bath or Surface calibrator, the LTR-150 saves hours of time and effort when calibrating or verifying validation sensors.

The LTR-150 is backward compatible with the Validator 2000, Validator AVS, ValProbe or RF ValProbe software for automatic sensor calibration or can be used stand-alone via its easy to use touch screen display.



### Features & Benefits

- Operating range of -30 to 150°C with temp stability of up to 0.01°C and uniformity of up to 0.1°C
- Fast Heating and Cooling times
- Ability to be used as Dry Block, Liquid Bath and Surface Calibrator
- Calibration of up to 48 thermocouple with Dry Block insert savings hours of time
- Dry Block inserts are designed to accommodate thermocouples, IRTD, ValProbe flexible/bendable as well as RF ValProbe probes
- Software interface for all existing Kaye products (IRTD, Validator 2000, Validator AVS, ValProbe and RF ValProbe software for automatic / manual calibrations
- Liquid micro bath tub with sensor cage and magnetic stirrer can be used for thermocouples, special process probes as well as ValProbe rigid loggers
- Easy to use touch screen
- Universal Power Supply 100 - 240 VAC / 50 - 60 Hz
- Addition inserts available for calibrating specialty or process probes



# Flexibility and Efficiency with the LTR-150

The Calibrator is extremely flexible and allows within minutes a fast conversion from dry-block calibrator to micro bath or even surface temperature function.

## Dry-Block Function

The LTR-150 comes standard with a 48 channel insert with 16 wells for thermocouples, as well as 2 for the IRTD and 1 for the External Control Reference Probe.

Each thermocouple well has a sleeve which accommodate 3 thermocouples (similar to current models).

The LTR-150 also has several additional inserts available as options for calibration of specialty process probes.



## Micro Bath Function

The LTR-150 can also offer an optional insert which allows the unit to be used as a Micro bath. This allows the unit to easily be used for specialty probes or loggers such as ValProbes. The optional Micro Bath Tub kit comes with the Micro Tub, a sensor cage as well as a magnetic stirrer and sensor cover.

Kaye also offers Silicone Oil which covers the complete temperature range of the bath.

## Surface Temperature Function

Surface temperature sensors are calibrated using a special insert.

The reference probe is located directly beneath the contact surface of the insert. The insert is designed in such a way that the best temperature homogeneity is achieved in the center of the contact surface. The special design of the insert enables good thermal contact.

This optional insert makes the unit ideal for verification of Kaye Flat surface ValProbes.



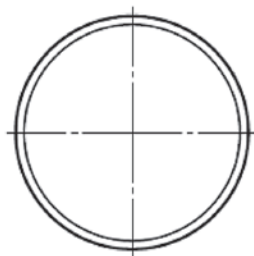
# Kaye LTR-150 Specifications

## Technical Data

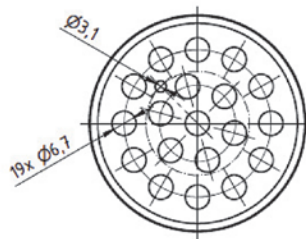
<b>Model</b>		<b>Block Dimensions</b>	
Model	LTR-150	-> Diameter	Ø 60 mm (Ø 2.36 in)
Control Sensor	External	-> Depth	170 mm (6.69 in)
<b>Dry Block</b>		<b>Display Unit</b>	
Temperature Range*	-30°C to 150°C (-22°F to 302°F)	Display Unit	7" Color-Touchscreen
Accuracy	±0.1°C (±0.18°F)	Resolution	0.1 / 0.01 / 0.001 - °C / °F / K
Stability	±0.010°C (±0.018°F)	<b>General Data</b>	
Uniformity	0.1°C (0.18°F)	Interface	Serial to Validator / Ethernet / 3 X USB
<b>Micro Bath</b>		Dimensions	210 mm x 300 mm x 380mm
Temperature Range*	-30°C to 150°C (-22°F to 302°F)	Weight (approximate)	15 kg / 33 lbs
Accuracy	±0.15°C (±0.27°F)	Power Supply	100 - 240 VAC, 50/60Hz
Stability	±0.010°C (±0.018°F)	Power Consumption	Approx. 375w
Uniformity	0.15°C (0.27°F)		
<b>Surface</b>			
Temperature Range*	-25°C to 150°C (-13°F to 302°F)		
Accuracy	±1°C (±1.8°F)		
Stability	±0.15°C (±0.27°F)		
Heating/Cooling time	20 to -25°C in 45 min 20 to 121°C in 30 min 121 to 20°C in 30 min -30 to 20°C in 20 min		

\* at an ambient temperature of 20°C / 68°F

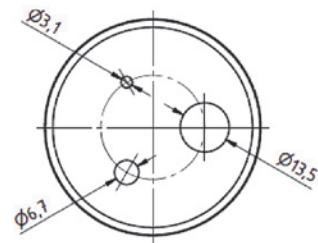
## Kaye LTR-150 Additional Inserts (units mm)



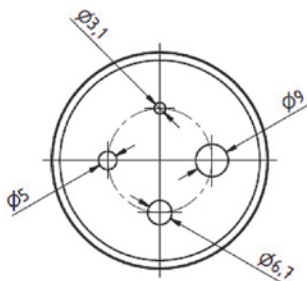
Insert Part Number:  
410-3031



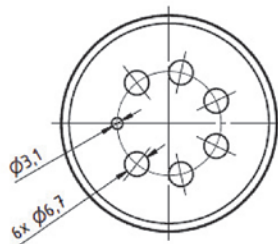
Insert Part Number:  
410-3033



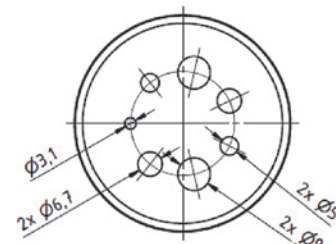
Insert Part Number:  
410-3034



Insert Part Number:  
410-3035



Insert Part Number:  
410-3036



Insert Part Number:  
410-3037

# Kaye LTR-150

Part Number	Description
X0365	<p><b>Kaye LTR-150 Multi-Functional Calibrator; Includes:</b></p> <ul style="list-style-type: none"> <li>• 48 Sensor Dry Block Insert with sleeves and transport lid</li> <li>• Insert exchange tool / Shielding Adapter</li> <li>• USB/Serial Adapter cable</li> <li>• Firmware to support Micro Bath &amp; Surface Calibrator functionality</li> <li>• External Control Reference Probe</li> <li>• US and EU Power cables (100-240VAC 50 / 60 Hz)</li> <li>• User Manual</li> <li>• Calibration Certificate</li> </ul>



## Accessories

Part Number	Description
425-3061	<p><b>Micro Bath Tub Insert; Includes:</b></p> <ul style="list-style-type: none"> <li>• Micro Bath tub</li> <li>• Sensor Cage with IRTD slot</li> <li>• Magnetic Stirrer</li> <li>• Sensor Cover</li> </ul>
V0830	1 l Silicone Oil - Temperature Range -30 to 150°C
412-3054	Surface Calibration Insert
441-1053	LTR-150 Shipping Case

